

Protections

Direct human interactions:

- 
-  All Illinois bats are protected under the **Wildlife Code (520 ILCS 5/1.1)**. Bats may not be shot, trapped, transported, or held in confinement except when a bat is found in an area where they may have contact with humans or domestic pets.
 -  Bats and their caves are protected under the **Illinois Cave Protection Act. - 525 ILCS 5**
 -  Several Bats are protected under the **US Endangered Species Act**

Human - Bat interactions



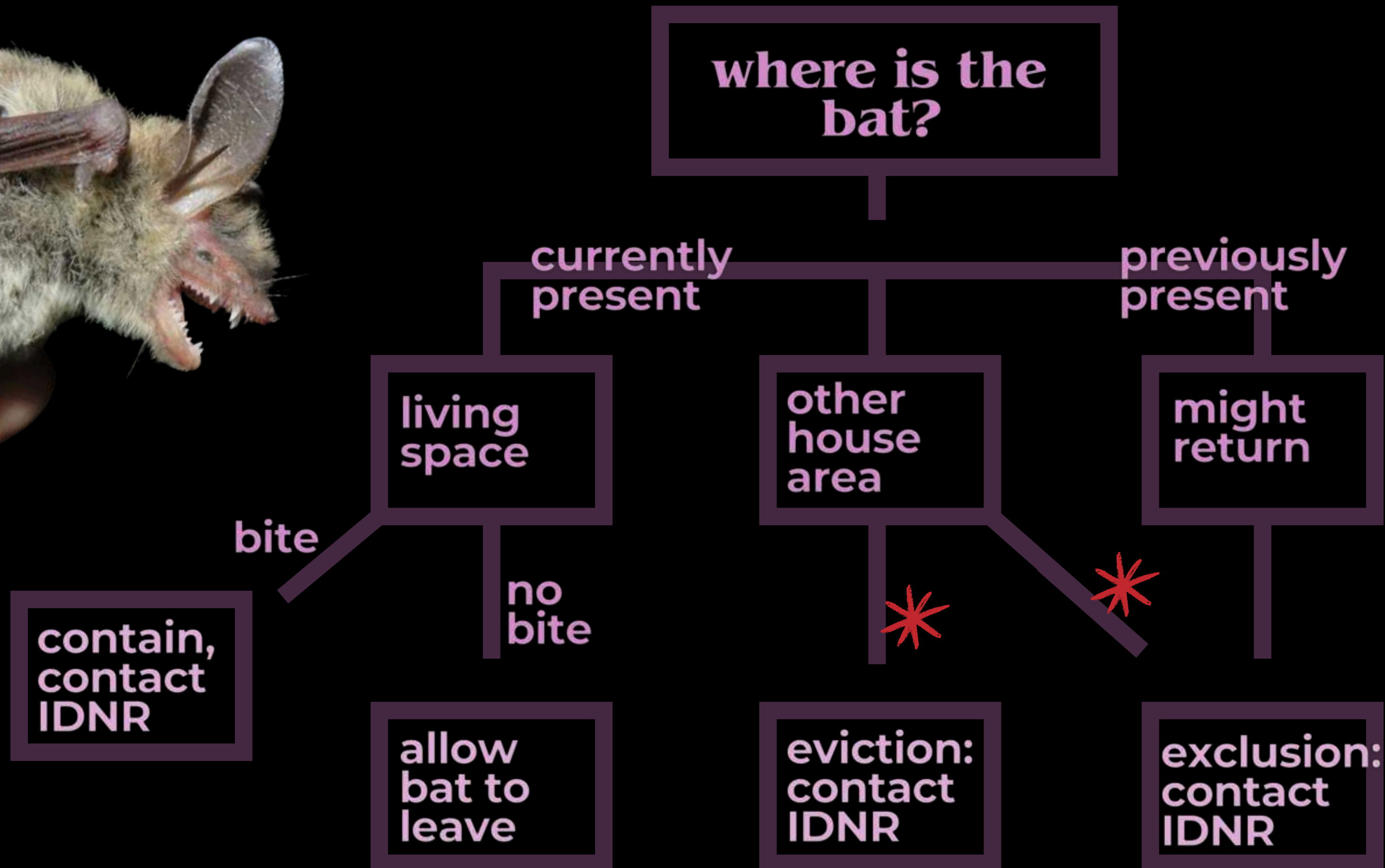
to sum it up;

Do not catch, keep, or kill

Do not disturb hibernacula

Do not disturb maternal colonies

**What if we cross
paths with a bat...?**



*Timing is critical

January

**Exclusion possible,
No Eviction**

February

March

**Eviction/Exclusion
Possible**

April

May

June

No Eviction/Exclusion

July

August

September

**Eviction/Exclusion
Possible**

October

November

**Exclusion possible,
No Eviction**

December

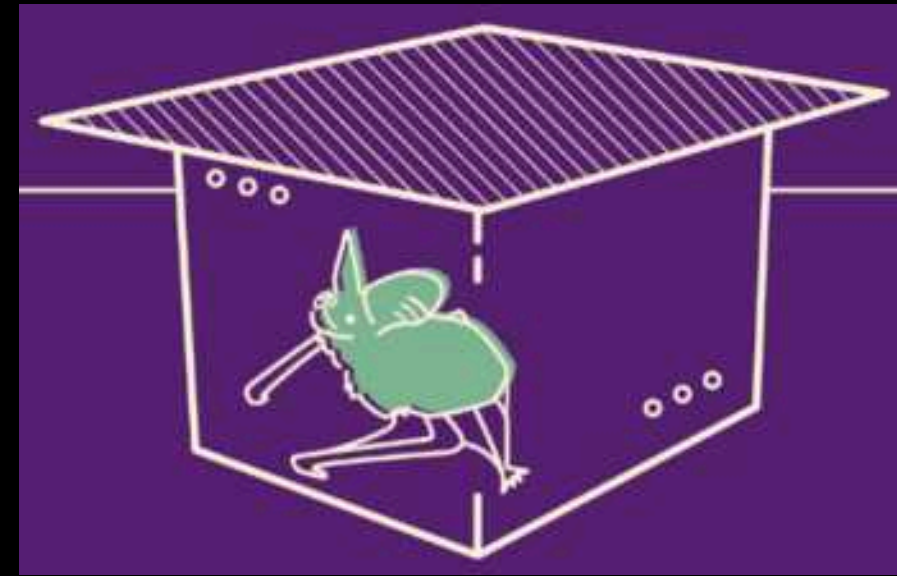
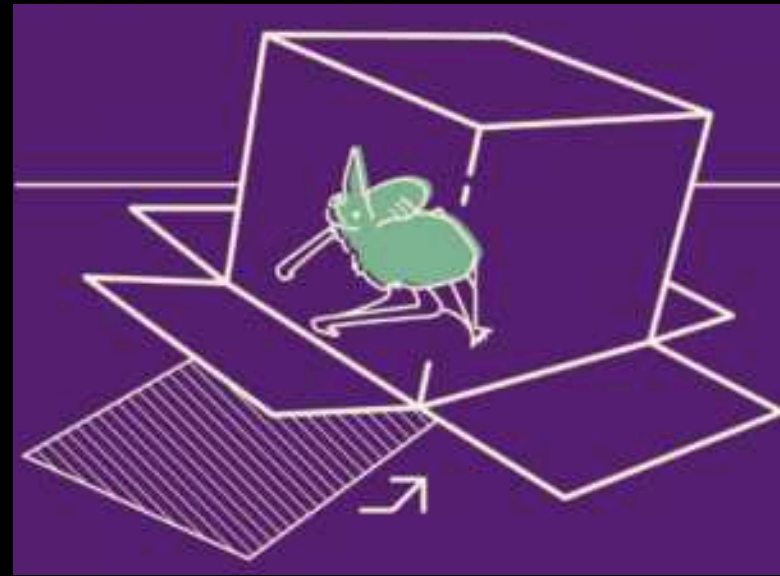
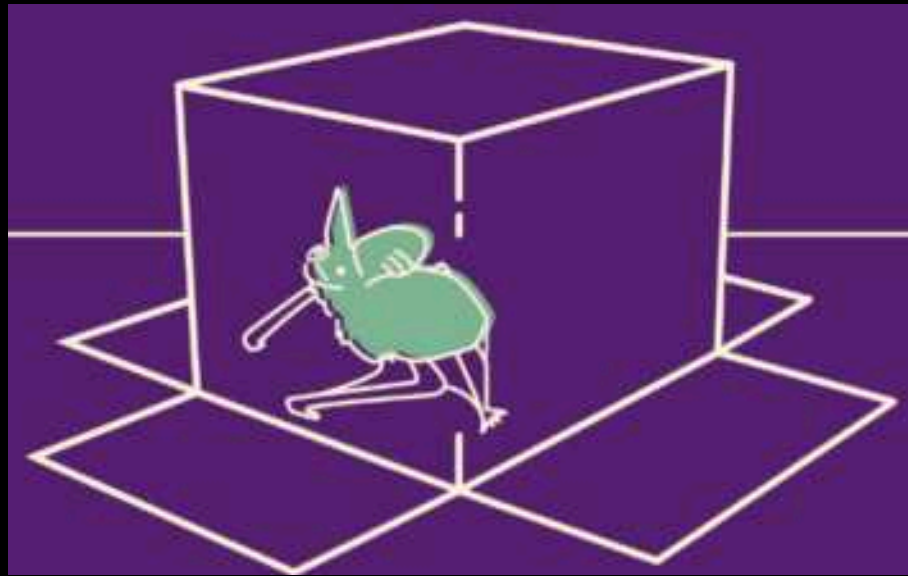
Bats cannot survive cold
temperatures

Maternal colonies with pups are
vulnerable when pups can't yet fly

Bats need time to find new
hibernacula

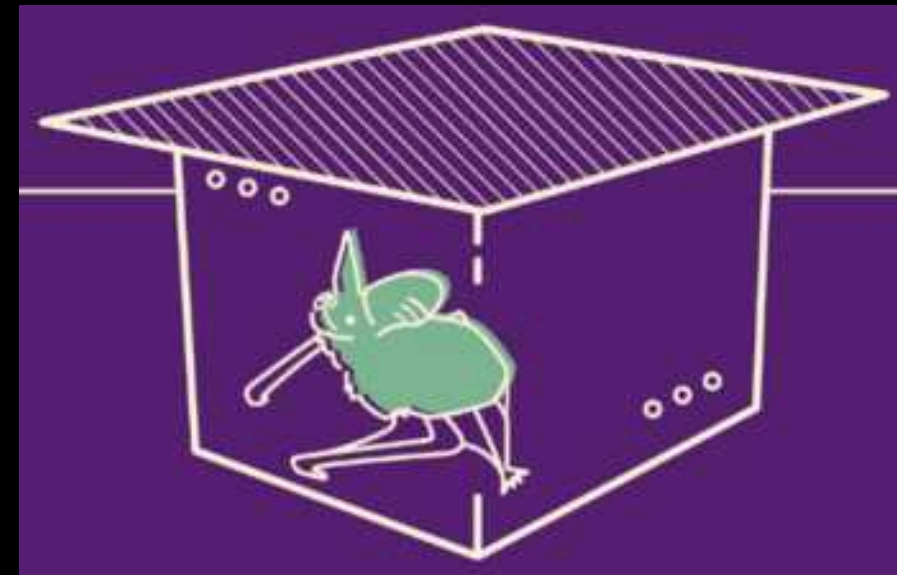
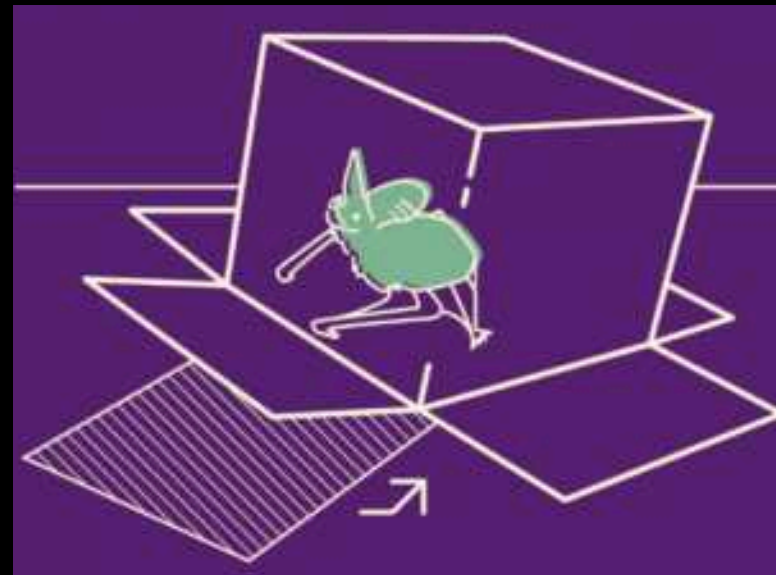
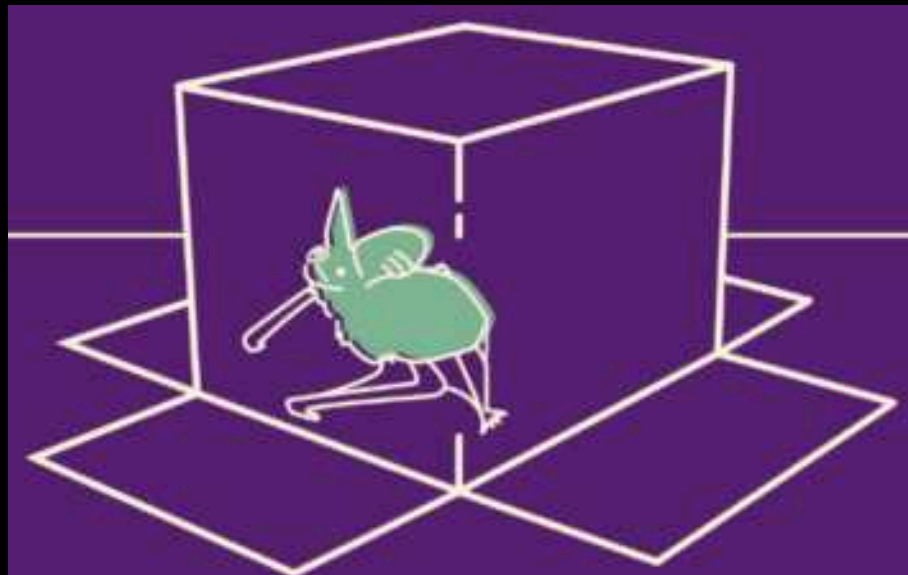
To make sure you are taking the
best course of action- contact IDNR

Helping bats get back outside



If Bitten

- Do not come into physical contact with a bat.
- If a bat is in your home, do not release the bat outdoors until after speaking with animal control or public health officials.
- After consulting with animal control or public health officials, the bat may need to be tested for rabies to determine if you need preventive treatment.



The best way to avoid crossing paths with a bat in your home is to take preventative measures, we call this:

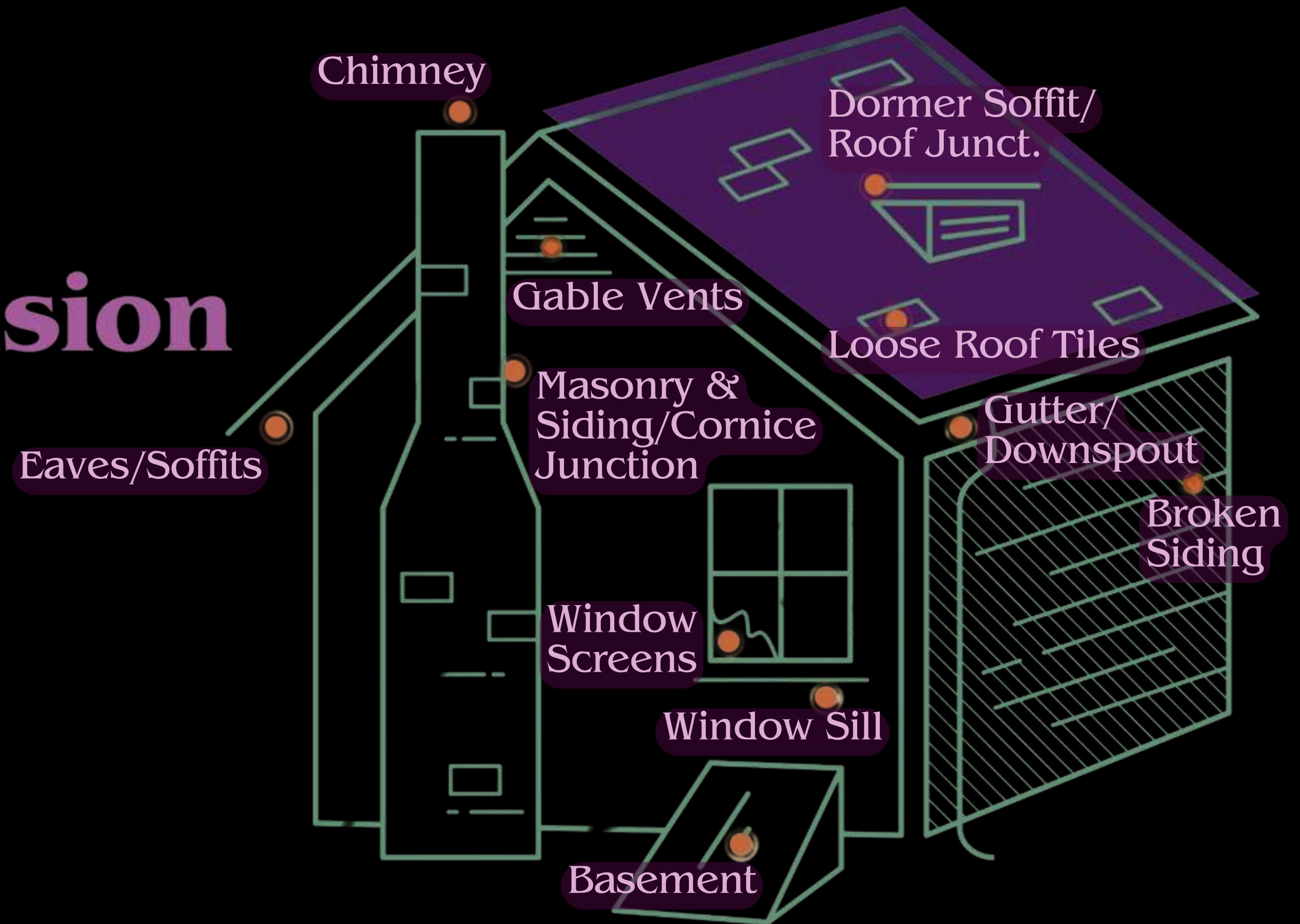
Bat Exclusion

Before bats take up residence:

- Seal all potential entrances
- Keep doors closed and lights off in the evenings to prevent bats from getting trapped in your home.



Bat Exclusion



Forced Eviction

Consult an Expert (seriously)

- 1 Observe access points
- 2 Install alternative
- 3 Determine a safe method for one-way exclusion at each access point
- 4 Monitor efforts for at least one week
- 5 Permanently seal access points
- 6 Enjoy your new neighbors in a more comfortable co-existence



Thank you!

Izzy Metcalf

Land & Water Steward

isabella.metcalf@dubuquecountyiowa.gov

Swiss Valley Nature Center: (563) 556-6745

EB Lyons Interpretive Center: (563) 556-0620

Illinois Bat
Conservation
Program



Illinois DNR
on Bats



Bat Conservation
International:
Bats in Homes



Merlin Tuttle Bat
Conservation:
Resources



**DUBUQUE
COUNTY**
CONSERVATION